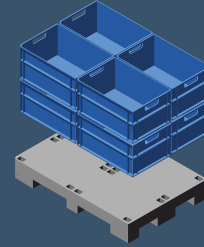


Gamma-Wopla

PLASTIC BOXES



Smart-Flow

PLASTIC PALLETS

We design packaging. You move smarter.

Who we are

Belgian experts in plastic load carriers **since 1998**. We are dedicated to **quality, sustainability, innovation**.

We design and produce reusable plastic **boxes, pallets** and **large foldable containers** that make logistics smarter, more sustainable and more efficient. From standard products to fully customized solutions, our Belgian precision and European reach help improve operational performance while supporting a circular, resource-efficient future.

Partnering with Gamma-Wopla / Smart-Flow means:

- Reliable, high-quality solutions
- Flexible, customer-focused approach
- Expertise in sustainable and efficient logistics



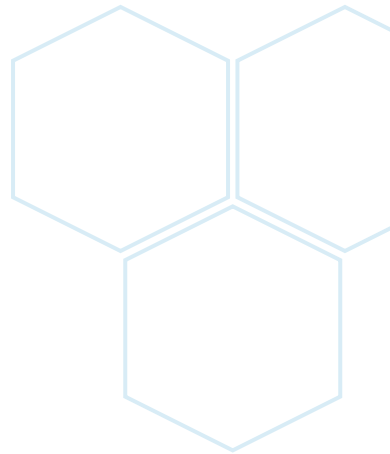
Our message

—

**We design packaging.
You move smarter.**

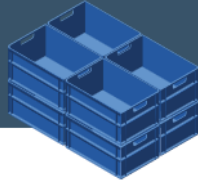
This quote captures the essence of our brand.

It's not just about the products we create,
it's about the impact they have on our customers' operations.



Family Vandewiele

Gamma-Wopla



Location:

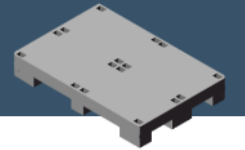
 **7700 Mouscron
Belgique**

Production & storage:

 **45 000 m²**



Smart-Flow



Location:

 **7700 Mouscron
Belgique**

Production & storage:

 **15 000 m²**



Research & Development

Specialized in the development & production of material handling products, mainly focused on loading carriers such as plastic boxes, plastic pallets and plastic containers of palletboxes with our in-house R&D department

We offer a large standard range of products but yearly we extend our range with new products and logistic solutions. This can be to complete our standard offer or to develop our custom made solutions.

Prototyping is done before launching the mould development.



Endless possibilities across all industries.

Trusted across all industries.



Food



Pharmaceutical & Cosmetics



Retail



Automotive



Agriculture



Transport & Logistics



General industry



Services

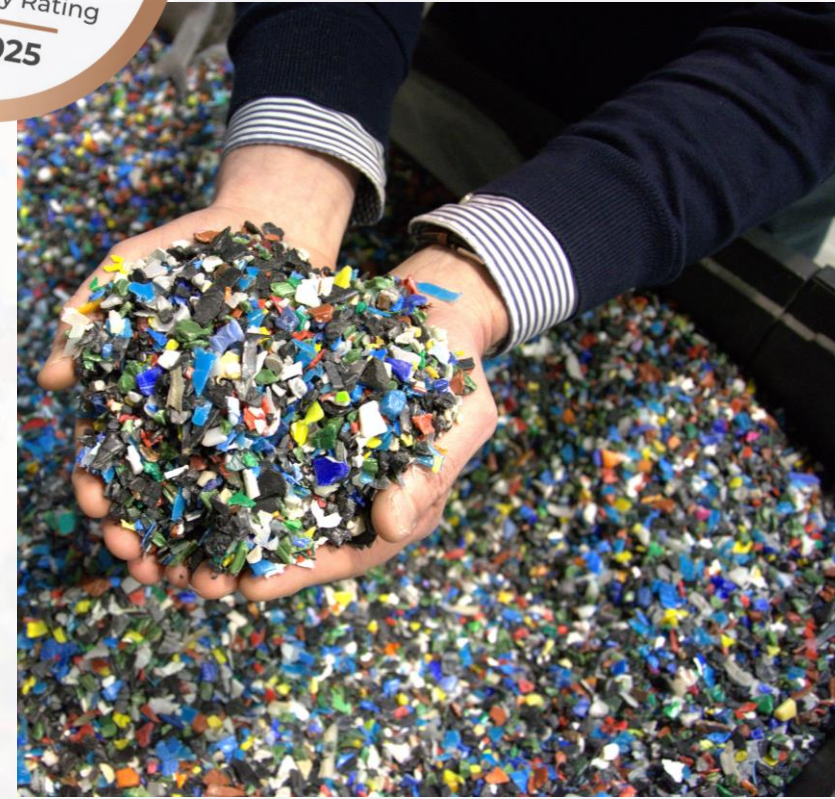


Sustainable Entrepreneurship

From **recycled**.
For **reuse**.
Ready to **reduce**.

Over **15.000.000 kg** of recycled plastic
= Over **2.500.000** reusable pallets & boxes

Less waste. Less CO₂.



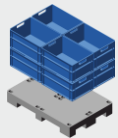
An aerial photograph of a large industrial building with a flat roof covered in solar panels. The building is surrounded by other industrial structures and parking lots. A green hexagonal graphic is overlaid on the left side of the image, containing text.

Gamma-Wopla
installed
2 418 solar panels

This represents **18 % of our energy
consumption**

What we offer

Our solutions



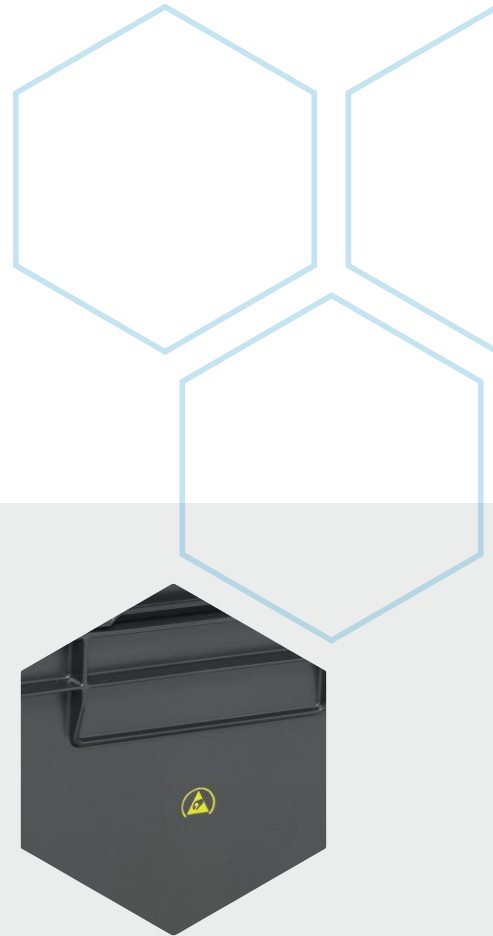
Automotive industries

Odette - GALIA

- Rigid & foldable boxes
- Galia – Odette certified & approved
- Dimensions 300x200 mm/ 400x300 mm/ 600x400 mm
- With or without labelholder (metal or plastic)
- Virgin & recycled material
- Personalization possible
- ESD possible upon request

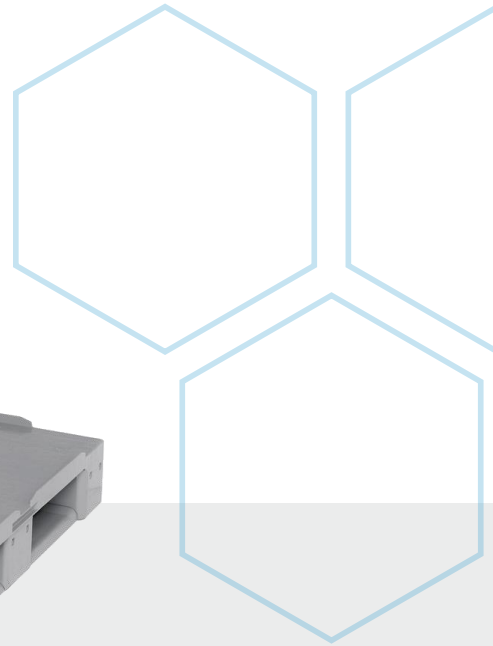
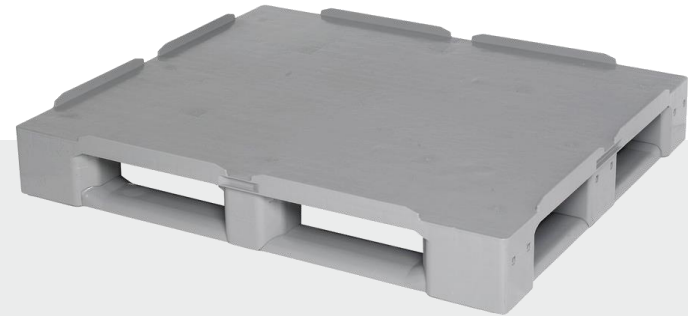


Automotive boxes



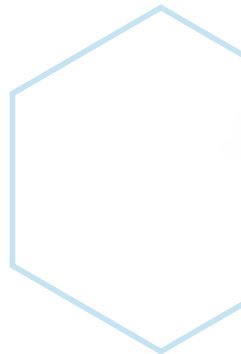
Pallets for Automotive industries

— Different size : 600 x 800 mm / 1200 x 1000 mm / 1200 x 800



Automation solutions

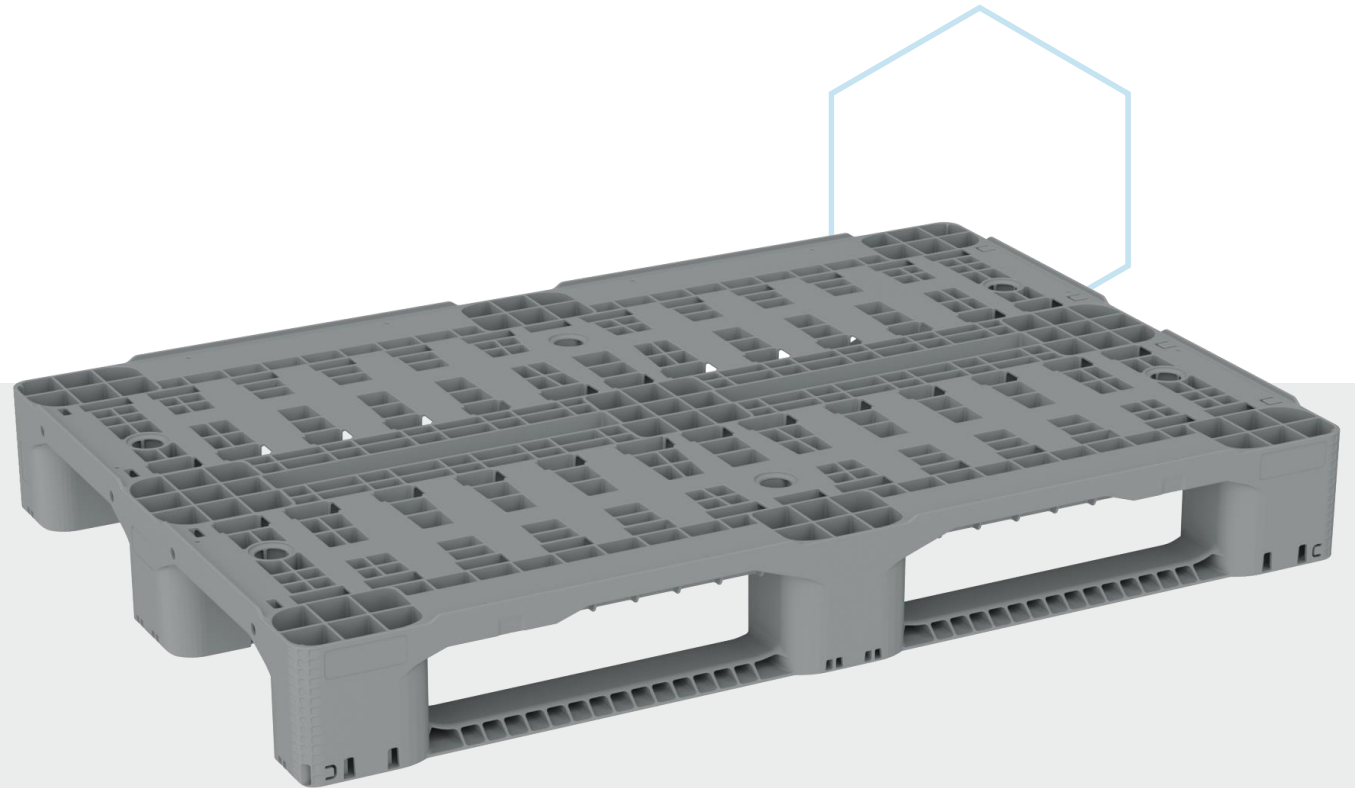
- Range of boxes for automation
- Footprint 600 x 400 mm
- Heights : 120 mm/ 270 mm moulds are in development
- 320 mm mould will follow soon
- Reinforced – sandwich bottom
- According to FM standards for water drainage



Automation solutions

SF800EUR

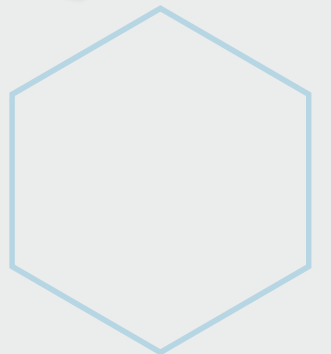
- Copy paste of a wooden europallet size wise
- With closed smooth skids
- One piece moulded
- Automation – conveyor and detection friendly
- With metal reinforcement for racking applications



ESD Range

Upon request mostly all our products can be made in ESD material

- Surface resistance between 10^{-4} and 10^{-8} Ohm
- Often in stock
 - SF800NL/P – SF800PREM – SF800POOL – SF800HYG – SF800CA – SF1000PES
 - E4322-1100 – E6422-5100 – E6401-44



Space Saving Solutions: Smart Sleeve Pack Systems



Smart Sleeve Pack
1200x800



Smart HyPack
1200x800



Smart Dolly Pack
600x800



Space Saving Solutions: Smart Sleeve Pack Systems

Advantages

- Foldable pallet box → important folding ratio
- Ideal returnable & re-usable packaging solution for closed loop applications
- Strong & Robust
- Tailor made sleeve can be developed
- Pallet base with skids
- Rackable & can be used on conveyors
- Sleeve can be locked to the pallet
- Sleeve can be locked to the lid
- Easy folding & unfolding
- Closed pallet topdeck
- Pallet base can be reinforced with metal to increase racking load
- Stacked units make proper and secure stacked boxes
- Recycable 100 %



Other Customer Specific Solutions

—



Our certificates



Bureau Veritas Certification

Certification
awarded to
GAMMA-WOPLA SA
Rue de la Royenne 49
7700 MOUSCRON
Belgium

Bureau Veritas Certification Belgium N.V./S.A.
declares that the Management System of the above organization has been audited and found to be in
accordance with the requirements of the management system standards detailed below.

Standard
ISO 9001:2015

Scope of supply
Development, production and sales of plastic packaging, fabricated by means of injection and provided for the
food sector, pharmacy, automotive and for general use.

Original Cycle Start Date: 03 December 1996
Expiry Date of Previous Cycle: 26 November 2024
Certification/Recertification Audit Date: 14 September 2024
Certification/Recertification Cycle Start Date: 31 October 2024
Subject to the continued satisfactory operation of the organization's
Management System, this certificate expires on: 26 November 2027

Certificate No: BE014220 Version: 2 Revision date: 28 November 2024

Hilde Sancen - Certification Manager Belgium

Managing Office: Bureau Veritas Certification N.V./S.A. - Plantin en Moretuslei 295, 2140 Antwerp, Belgium
Issuing Office: Bureau Veritas Certification N.V./S.A. - Plantin en Moretuslei 295, 2140 Antwerp, Belgium

Verdere toelichting met betrekking tot de scope van dit certificaat en de toepasbaarheid van de managementsysteem-
eisen, kan worden verstrekt door contact op te nemen met de geaccrediteerde organisatie. Om de geldigheid van dit
certificaat te controleren kunt u bellen naar: +32 (0)3 247 94 00

Page 1 of 1



CERTIFICAT
◆
CERTIFICADO
◆
CERTIFIKAT
◆
CERTIFICATE
◆
CERTIFIKAT



CERTIFICATE

The Certification Body
of TUV SUD Management Service GmbH
certifies that


SMART INDUSTRIAL PACKAGING SOLUTIONS
SMART FLOW EUROPE S.A.
133 Rue du playitout
7700 MOUSCRON
Belgium

has established and applies
a Quality Management System for

Development, production and commercialization of
plastic packaging and other logistic supports.

An audit was performed, Order No. 727017772.
Proof has been furnished that the requirements
according to

DIN EN ISO 9001:2015
are fulfilled.

The certificate is valid from 2023-02-07 until 2026-01-01.
Previous certificate valid until 2023-01-01.
Certificate Registration No.: 12 100 53318 TMS.


Head of Certification Body
Munich, 2023-02-07

TUV SUD Management Service GmbH • Zertifizierungsstelle • Ridlerstrasse 57 • 80339 München • Germany
www.tuv-sud.de/certificate-validity-check

TUV®

BRONZE | Top 35%

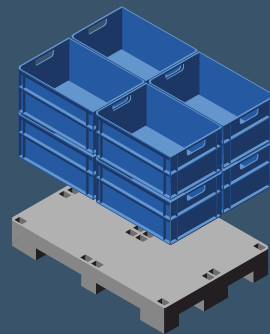
ecovadis

Sustainability Rating

FEB 2025

Gamma-Wopla

PLASTIC BOXES



Smart-Flow

PLASTIC PALLETS

More information?

Mikaël Vandewiele
mvdw@gammawopla.com

Jan Vandewiele
jvdw@gammawopla.com

Gamma- Wopla SA

Rue de la Royenne 49, 7700 Mouscron, Belgium | info@gammawopla.com | +32 (0) 56 85 20 85 | BE 0460 680 813

Smart-Flow Europe SA

Rue du Plavitout 133, 7700 Mouscron, Belgium | info@smart-flow.com | +32 (0) 56 28 26 90 | BE 0472 047 134